

Cotegra fungicide

technology sheet

The new standard for sclerotinia.

- Delivers industry leading disease management
- Combines two leading active ingredients in a convenient liquid premix
- Provides significant yield improvements in canola, dry beans and soybeans

Active ingredients

Boscalid – Group 7
Prothioconazole – Group 3

Formulation

Suspension concentrate

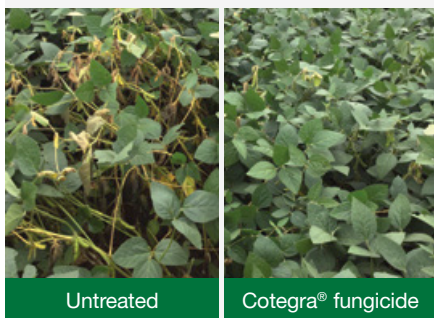
One case contains

2 x 9.8 L jugs

Storage

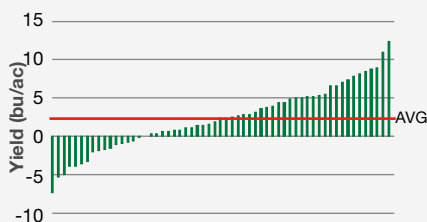
Requires heated storage.

Protection from key foliar diseases and white mold in soybeans



Source: AgSolutions® Performance Trials, Ripley, ON, 2017

Increased soybean yield with Cotegra fungicide



Source: AgSolutions Performance Trials, ON & QC, 2015-2019. N=59 on-farm trials

Crops

Canola

Dry beans¹

Soybeans

Staging

20% to 50% flowering

20% to 50% flowering

Early flower to mid-pod development (late R1 to R3)

Diseases controlled

In canola.

Sclerotinia stem rot (*Sclerotinia sclerotiorum*)

In dry beans.

White mold (*Sclerotinia sclerotiorum*)²

In soybeans.

Asian soybean rust (*Phakopsora pachyrhizi*)

Frog eye leaf spot (*Cercospora soja*)

Pod and stem blight (*Diaporthe phaseolorum*)

Septoria brown spot (*Septoria glycines*)²

White mold (*Sclerotinia sclerotiorum*)²

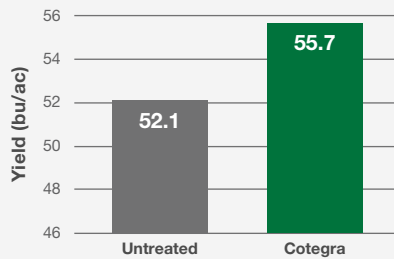
¹ Dry beans include *Lupinus* spp. (grain lupin, sweet lupin, white lupin, white sweet lupin), *Phaseolus* spp. (field beans (dry common and coloured beans) such as kidney, black, cranberry, pink, navy bean, pinto bean, tepary bean, lima bean (dry)), *Vigna* spp. (adzuki bean, blackeyed pea, catjang, cowpea, crowder pea, moth bean, mung bean, rice bean, southern pea, urd bean, broad or faba bean (dry)).

² Suppression.

BASF

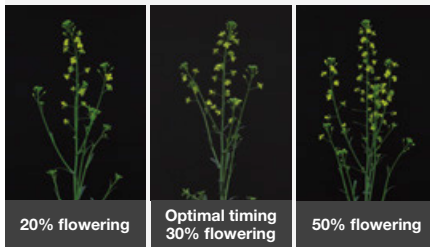
We create chemistry

The Cotegra advantage in canola

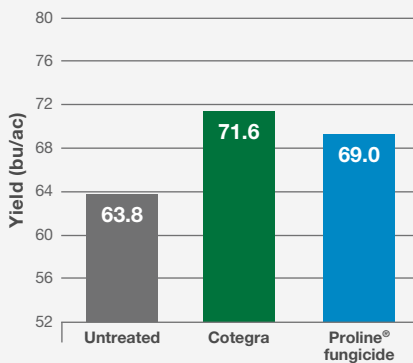


For all trials, Cotegra was applied at the 80 ac/case rate (240 g a.i./ha).
Source: **AgSolutions** Performance Trials, 2016-2020. N=36

Application timing



Canola research plots, high disease incidence (>50%)



Average sclerotinia incidence over 19 trials was 73.4% with all trials having over 50% disease incidence (50%+ of plants in-field being affected).

Source: RCBD Research and Commercial Development (RCD) trials, 2016-2020. N=19

For more information:

Call **AgSolutions** Customer Care at 1-877-371-BASF (2273)

Visit agsolutions.ca

Application rates

One case of Cotegra fungicide will treat 50 to 80 acres, depending on crop.³

Canola	240 to 280 ml/ac (0.6 to 0.7 L/ha) ⁴
Dry beans	400 ml/ac (1.0 L/ha)
Soybeans	280 ml/ac (0.7 L/ha)

Water volume

Ground application ⁵	80 L/ac (20 gal/ac) minimum
Aerial application	20 L/ac (5 gal/ac) minimum

³ A second application can be made 7 to 14 days after the first application if disease persists, or if weather conditions favour disease development. Use the shorter interval when disease pressure is high to obtain extended protection and maximum yield benefit.

⁴ Use the high rate if weather conditions are favourable for disease development (i.e. high humidity/moisture) and/or when risk for disease development is high (i.e. narrow host rotation with disease history and high potential for inoculum).

⁵ Higher water volumes recommended for optimal coverage.

Mixing order

1. Fill the cleaned spray tank 1/2 full of water and start agitation.
2. Add the required amount of Cotegra fungicide to the tank.
3. Continue agitation while filling the remainder of the spray tank.
4. After use, clean the spray tank according to label precautions.

Application tips

Rainfastness – Avoid applying when rain is forecasted within 3 hours of application.

Do not apply more than two applications of Cotegra per season.

Pre-harvest interval

21 days after application for soybeans and dry beans.

36 days after application for canola.

Tank Mixes

Contact **AgSolutions** Customer Care or your BASF **AgSolutions** Retail Representative for additional information on supported tank mixes.

Always read and follow label directions.

AgSolutions and COTEGRA are registered trade-marks of BASF, used under license by BASF Canada Inc. COTEGRA fungicide should be used in a preventative disease control program. © 2021 BASF Canada Inc.

Proline is a registered trade-mark of Bayer Intellectual Property GmbH.