

# Cabrio fungicide

## technology sheet

### Advanced disease control with proven **Plant Health Benefits** for fruit and vegetables.

- Broad-spectrum control of key diseases
- Binds quickly to the surface of leaves for rapid rainfastness
- Inhibits germination of fungal spores to prevent infection
- Unique **Plant Health Benefits**<sup>1</sup> for disease control and better management of stress, for increased yield potential

#### Active ingredient

Pyraclostrobin – Group 11

#### Formulation

Emulsifiable granules

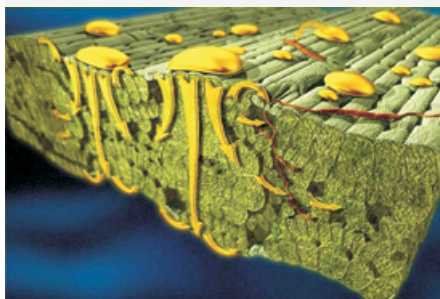
#### One case contains

4 x 2.27 kg jugs

#### Storage

Protect from freezing.

#### Cabrio® penetrates the leaf



Cabrio interferes with fungal cell respiration and production of energy, causing fungi to stop growing and die.  
Source: BASF

#### Crops and timing

Blueberries (lowbush and highbush)  
10 to 14 day interval

Bulb vegetables  
7 to 14 day interval  
10 day interval

Cucurbit vegetables  
7 day interval  
7 to 14 day interval

Fruiting vegetables  
7 day interval  
7 to 14 day interval

Garden beet/radish tops  
7 day interval  
7 to 14 day interval

Root vegetables  
7 day interval  
7 to 14 day interval

Stone fruits  
7 to 14 day interval  
7 to 14 day interval

Strawberries  
7 to 14 day interval

#### Diseases controlled

Anthracnose, Phomopsis

Purple blotch  
Downy mildew

Alternaria, anthracnose, gummy stem blight  
Powdery mildew

Late blight  
Anthracnose, early blight

Powdery mildew  
Alternaria, cercosporara leaf spot

Powdery mildew  
Alternaria, cercosporara leaf spot

Anthracnose  
Powdery mildew (Cherries only)

Anthracnose

During periods of rapid growth or high disease pressure, use a shorter interval.

**BASF**

We create chemistry

<sup>1</sup> **Plant Health Benefits** refer to products that contain the active ingredient pyraclostrobin. All comparisons are against grower standard unless otherwise stated.

## Application rates

**One jug of Cabrio treats 2 to 4 ha (5 to 10 acres).**

Crops	Diseases controlled	Application rate
Blueberries (lowbush and highbush)	Anthracnose, phomopsis	1 kg/ha
Bulb vegetables	Purple blotch, downy mildew	0.56 to 0.84 kg/ha
Cucurbit vegetables	Alternaria, anthracnose, powdery mildew Gummy stem blight	0.56 to 0.84 kg/ha 0.84 kg/ha
Fruiting vegetables	Anthracnose, early blight Late blight	0.56 to 0.84 kg/ha 0.56 to 1.0 kg/ha
Garden beet/radish tops	Alternaria, cercosporara leaf spot Powdery mildew	0.56 to 1.1 kg/ha 0.56 to 0.84 kg/ha
Root vegetables	Alternaria, cercosporara leaf spot Powdery mildew	0.56 to 1.1 kg/ha 0.56 to 0.84 kg/ha
Stone fruits	Anthracnose, powdery mildew (Cherries only)	0.67 kg/ha
Strawberries	Anthracnose	0.56 to 1.0 kg/ha

During periods of rapid growth or high disease pressure, use the higher rate.

## Mixing order

1. Ensure the spray tank is clean before use.
2. Fill the tank 1/2 full of water and start agitation.
3. Add the required amount of Cabrio fungicide to the tank.
4. Continue agitation while filling the remainder of the spray tank.
5. After use, clean the spray tank according to label precautions.

## Application tips

**Rainfastness** – 1 hour.

**Restricted entry interval** – 12 hours, with the exception of:

Highbush blueberries, hand harvesting – 1 day.

Bulb vegetables, thinning – 3 days.

Cucurbit vegetables, hand harvesting, thinning and pruning – 3 days.

Root vegetables, hand harvesting – 3 days.

Stone fruits, hand thinning and pruning – 9 days.

**Resistance management** – Cabrio should be integrated into an overall disease and pest management program. Cultural practices known to reduce disease development should be followed. Use in rotation with fungicides with alternative modes of action. Do not exceed the total number of sequential applications or total number of applications per season as stated in the crop section of the label.

## Pre-harvest interval

7 days for bulb vegetables.

0 days for garden beet/radish tops.

3 days for cucurbit vegetables.

0 days for fruiting vegetables.

3 days for root vegetables.

## Tank mixes

None on label.

Contact **AgSolutions®** Customer Care or your BASF Sales Representative for information on supported tank mixes.

## For more information

Call **AgSolutions** Customer Care at 1-877-371-BASF (2273) or visit [agsolutions.ca/horticulture](https://www.agsolutions.ca/horticulture).

## Always read and follow label directions.