

Viper® ADV

Herbicide

SUPPORTED BY THE

ADVANCED WEED CONTROL

PROGRAM

Proven, broad-spectrum weed control for field peas, soybeans and dry edible beans.

- Convenient, user-friendly 100% liquid formulation
- Multiple modes of action to help manage resistant weeds
- Control of resistant wild mustard and volunteer canola
- Excellent rotational flexibility

Active ingredients

Imazamox – Group 2
Bentazon – Group 6

Formulation

Liquid concentrate

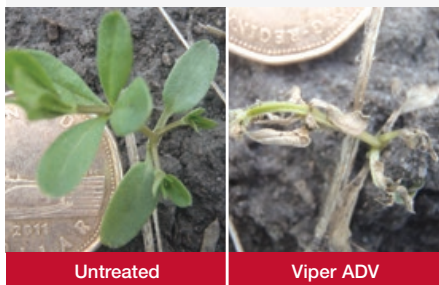
One case contains

2 x 8.1 L jugs
Also available in 129.6 L drum

Storage

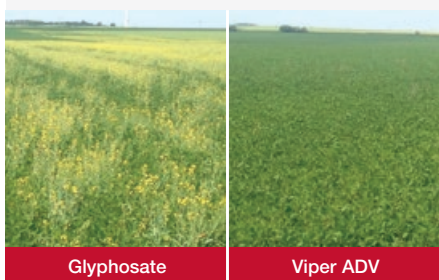
Requires heated storage.

Cleavers control, 7 days after application of Viper® ADV herbicide



Source: Grower Applied Strip Trials, SK, 2012

Volunteer canola control with application of Viper ADV vs glyphosate in soybeans



Source: Grower Applied Strip Trials, SK, 2012

Crops

Dry edible beans¹
Field and succulent peas

Soybeans

Staging

1 to 2 trifoliolate leaf
3 to 6 above ground node
(3 to 6 true leaf)
cotyledon to 4th trifoliolate

Weeds controlled

Broadleaves

Cleavers^{2,3}
Cow cockle
Green smartweed
Hemp-nettle³
Kochia^{2,3}
Lamb's quarters
Redroot pigweed
Round-leaved mallow³
Russian thistle
Shepherd's-purse
Sow thistle (annual)³
Sow thistle (perennial)⁴
Stinkweed
Volunteer canola⁵
Volunteer lentils⁵
Wild buckwheat³
Wild mustard²

Grasses

Barnyard grass
Green foxtail
Japanese brome grass³
Persian darnel
Volunteer barley
Volunteer canary seed
Volunteer durum wheat
Volunteer spring wheat⁶
Volunteer tame oats
Wild oats
Yellow foxtail

Staging

cotyledon to 4 leaf

1 to 4 true leaf
or early tillering

¹ Dry edible beans may vary in their tolerance to herbicides. See label for important notes. For dry edible beans, Viper ADV requires addition of Basagran® Forte herbicide plus 28% UAN.

² Includes resistant biotypes.

³ Suppression.

⁴ Top growth suppression only.

⁵ Including Clearfield® and non-Clearfield varieties.

⁶ Excluding Clearfield wheat.

BASF

We create chemistry

Application rates

One case will treat 40 acres. One shuttle treats 320 acres.

Viper ADV ⁷	404 ml/ac (1 L/ha)
28% UAN ⁸	809 ml/ac (2 L/ha)

Water volume

Ground application only 40 L/ac (10 gal/ac)

⁷ For dry edible beans only, Viper ADV requires the addition of Basagran Forte at 146 ml/ac (360 ml/ha) to control additional weeds. Basagran Forte is not included in case.

⁸ Addition of a nitrogen source (28% UAN) is recommended for grass control, and is not included in the case.

Mixing order

1. Add 3/4 of needed water.
2. Start agitation and continue agitation throughout mixing and spraying procedure.
3. Add the required amount of Viper ADV.
4. If tank mixing Basagran Forte for dry edible beans or glyphosate for Roundup Ready® soybeans⁹, add the required amount of tank-mix partner.
5. Add correct amount of nitrogen source (required for grass control).
6. Complete filling with water and continue agitation.

Application tips

Rainfastness – 6 hours.

Avoid application immediately before or after frost or during unseasonably cold weather. Apply in warm weather (15°C to 28°C) when weeds are actively growing.

Use higher water volume on dense weeds and thicker canopies.

Initial transient crop yellowing may occur but is outgrown and will not affect yield.

Pre-harvest interval

40 days after application for succulent peas.

60 days after application for field peas, soybeans and dry edible beans.

Follow crops

3 months after application

Winter wheat¹⁰

1 year after application

Canary seed¹⁰

Clearfield canola

Chickpeas

Durum wheat¹⁰

Field corn

Field peas

Flax¹⁰

Lentils

Non-**Clearfield** canola^{10,11}

Soybeans

Spring barley

Spring wheat

Sunflowers (incl. **Clearfield** sunflowers)

Tame oats¹⁰

2 years after application

Mustard (condiment-type only)¹⁰

Tank mixes

Herbicide for dry edible beans: Basagran Forte at 146 ml/ac (360 ml/ha)

Herbicide for Roundup Ready® soybeans: Glyphosate⁹

None on label for field or succulent peas.

Contact your local BASF **AgSolutions**® Grower or Retail Representative or call **AgSolutions** Customer Care at 1-877-371-BASF (2273) for information on supported tank mixes.

⁹ For soybeans, 28% UAN is not required when tank mixing with glyphosate.

¹⁰ If drought conditions are experienced between June 1 and September 1 in the year of application, delay planting of winter wheat, durum wheat, canary seed, tame oats, flax and canola (non-**Clearfield**) by an additional year. If drought is experienced between June 1 and September 1 in the year of application OR between June 1 and September 1 in the year following application, delay planting of mustard by an additional year.

¹¹ Research studies have shown that non-**Clearfield** canola may be safely planted the year following an application of Viper ADV in all regions of Western Canada except the Northern Peace River Region of Alberta (any area in Township 100 and north, including the areas of Keg River, La Crete, Fort Vermilion and High Level). In this region, non-**Clearfield** canola can be grown safely the second year following an application (2 YAT).

For more information: Call **AgSolutions** Customer Care at 1-877-371-BASF (2273) or visit agsolutions.ca.

Always read and follow label directions.

AgSolutions, **BASAGRAN**, **Clearfield** and **VIPER** are registered trademarks of BASF; all used under license by BASF Canada Inc. © 2025 BASF Canada Inc.

Roundup Ready® is a registered trademark of Bayer Group. Used under license. © 2025 Bayer Group. All rights reserved.