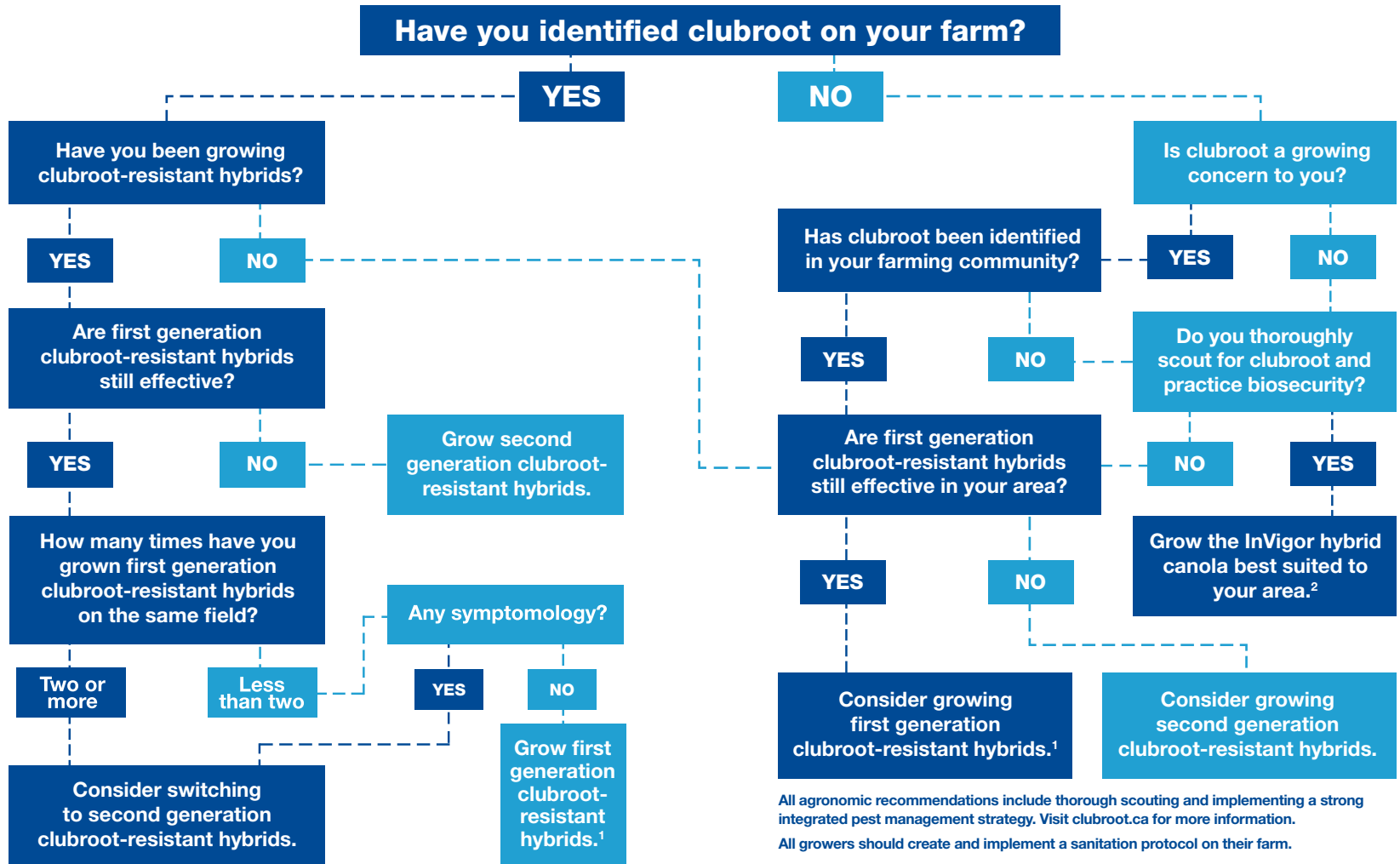


Selecting a clubroot-resistant option for your InVigor® hybrid canola.



All agronomic recommendations include thorough scouting and implementing a strong integrated pest management strategy. Visit clubroot.ca for more information. All growers should create and implement a sanitation protocol on their farm.

¹ When growing clubroot-resistant hybrids, we recommend using first generation clubroot-resistant hybrids for two cycles OR until clubroot symptoms appear, whichever comes first, then consider switching to second generation clubroot-resistant hybrids. All InVigor clubroot-resistant hybrids have been developed to be resistant to the most predominant clubroot pathotypes found in Canada at the time of their registration.
² For more information on clubroot-resistant options from BASF, visit agsolutions.ca/clubroot or call AgSolutions® Customer Care at 1-877-371-BASF (2273).

Results may vary on your farm due to environmental factors and preferred management practices.

Always read and follow label directions.

AgSolutions, and INVIGOR are registered trade-marks of BASF. © 2020 BASF Canada Inc.

